




# **BIRLA** **OPEN MINDS**

**INTERNATIONAL SCHOOL**  
**AMRAVATI**

**Nurturing India's Tomorrow**





Just as energy is  
the basis of life  
itself, and ideas  
the source of

**innovation**

so is innovation the  
vital spark of all  
human change,  
improvement and  
progress - Ted Levitt

The Birla family has a legacy of nation building and understands the importance of a high-quality education system. Birla Edutech Limited (BEL), The Yash Birla Group company, has embarked on a journey to revolutionize education in India, by becoming educational change agents to learners across all educational segments - be it preschool, K-12 school, higher education, technological or vocational education. It promises to build a uniting culture, provide rich education, develop support educational solutions and develop a strong sense of community through each of its multifaceted institutions by nurturing sensitivity towards the Society, Economy and Environment.

Birla Open Minds International School, an initiative of Birla Edutech Ltd. provides a strong foundation with the help of rigorous scholastic and co-scholastic activities like Physical Education, Performing Arts, Visual Arts and Life Skills, and these curricula are developed by the Birla Edutech Research and Development department with an aim to provide an opportunity to learn beyond the classroom at the Centre for Excellence, both of which are backed by the 360° support of Birla Edutech Limited. It offers comprehensive solutions for education that encircle the individual's learning period right from early years to K-12 schooling to University years.

## **Birla Open Minds International School Mission –** BOMIS has pledged to prepare innovative, skilled and economically independent individuals who will be leaders in their respective fields.

**"Tell me and I forget. Teach me and I remember. Involve me and I Learn."**  
- Benjamin Franklin

### **BOMIS Vision and Mission**

Birla Open Minds International School, focuses on providing world class education that nurtures India's tomorrow.

#### **Vision**

Birla Open Minds International School, a centre of academic excellence, addresses the needs of the 21<sup>st</sup> century by preparing individuals who are highly skilled, career oriented, economically independent, innovative and sensitive to the economy, society and environment.

#### **Mission**

Birla Open Minds International School is a unique school community that works in collaboration with students and parents to provide quality education in a positive and supportive environment. The school achieves this goal by creating and implementing a world class curriculum that ensures that children are healthy, safe, disciplined, engaged, supported, challenged and prepared for the rigors of the current century.

### **BOMIS Philosophy**

Birla Open Minds International School, firmly reiterate and restore what Tagore called the hallmark of childhood - 'joy of learning' and the 'creative spirit'. BOMIS believes in the uniqueness of each child thereby fostering holistic development through integrated learning opportunities. Our philosophy is based on the constructivist approach where the learners are actively involved in their learning in a self-governing environment. Learning experiences are interactive, student-centred and progress from known to unknown, concrete to abstract and local to global.

The teachers are aware of each student's emotional, social, psychological, and physical development as well as their cognitive growth. They provide a motivational framework for each learning opportunity.

A learner at BOMIS develops global perspective and life skills to help and excel in his or her desired field and becomes a life-long learner.



### **BOMIS Values and Ethos**

Birla Open Minds International School provides a nurturing environment wherein young children feel loved, cared, secured, respected & valued. The schools focus on 4 C's: Care, Co-operation, Collaboration and Courtesy. We believe that today's children are tomorrow's leaders!

### **BOMIS: The Logo**

The Birla Open Minds International School Logo underlines the philosophy of 'Transformation' at all levels. A Geometric Triangular shape melts into free form-that of birds taking flight. In Birla Open Minds, ideas transform into action, creativity takes flight and students are encouraged to constantly attain greater heights. Freedom of thought and expression aids the metamorphosis of the children into innovative and sensitive individuals, who have hunger for knowledge with open minds and desire to excel.



# Birla Open Minds International School

## Infrastructure – The aesthetical design planning and facilities are provided to ensure educational efficacy and enable students to exploit modern technology.

### BOMIS Infrastructure

Our school is designed to ensure an engaging, appealing and child-friendly setting for our BOMISites. Firstly, our infrastructure is in sync with the different learning modalities and school curriculum. Secondly, the state-of-the-art classrooms, modern science and IT labs, world class libraries, lush outdoors, range of sports & creative arts facilities, the overall eco friendly & green design of the school reflect the ethos of the school. The faculty, comprising of experienced teachers with excellent teaching track records, has been recruited from the different parts of the country.

The infrastructure reflects the ethos of the school via:

- ✔ Eco friendly school design
- ✔ State of the art technology enabled classrooms
- ✔ High space per child ratio
- ✔ Modern well-equipped Labs
- ✔ Hi-tech computer and IT labs
- ✔ World class well stocked libraries
- ✔ Lush outdoors
- ✔ Range of sports facilities
- ✔ Various creative arts facilities
- ✔ Extensive technology and online support
- ✔ Multipurpose Hall
- ✔ Innovation Centres / Activity Zones
- ✔ Multi-cuisine Cafeteria

01

Supported by an effective, well-planned school design and infrastructure that is in sync with the curriculum

02

State-of-the-art classrooms, modern science and IT labs, world class libraries, lush outdoors, a range of sports & creative arts facilities, the overall eco friendly & green design of the school

03

Best practices and customisation to local context are offered along with creative and energy efficient school designing

### Learning Environment

For education at school to be effective, the environment needs to be conducive to learning, allowing the child the required space and time to interact within the learning and teaching process. Our schools are thus especially designed to create and maintain a stimulating learning environment where BOMISites can actively participate, grow and learn in a natural way.





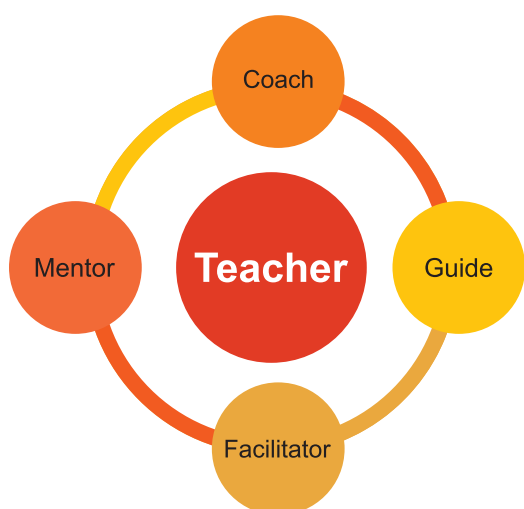
## Teachers at Birla Open Minds International School – The teacher will be a knowledge navigator, a facilitator and a mentor rather than a knowledge provider.

### Teachers at BOMIS

The school is a learning organisation involved in a continuing process of reflection, development and improvement. Research studies have proved time and again that the teacher, plays a pivotal role in the process of teaching and learning. At BOMIS, the teacher plays the role of a caring facilitator working towards interpreting the needs of the child and the requirements of the curriculum in order to provide meaningful learning experiences.

To put it simply, the teacher's role is to love, inspire and encourage children to believe in themselves and their dreams. A teacher in our school will be a knowledge navigator, facilitator and a mentor rather than a knowledge provider.

The BOMIS teacher is at the centre of the entire experience, she/he is nurtured with opportunities of growth and learning.

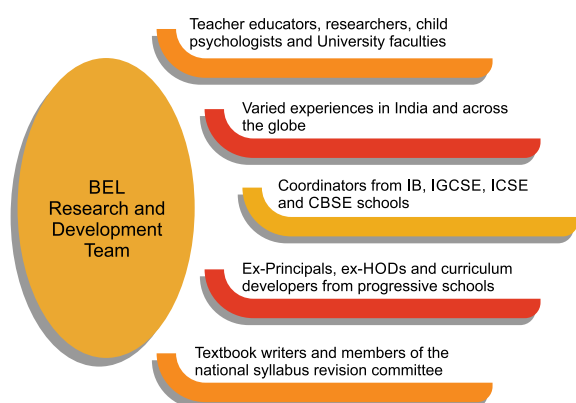


- ✔ The teacher at BOMIS is a coach who perseveres to hone the learner's skills and prepares him to face challenges independently, with confidence and conviction.
- ✔ The teacher at BOMIS is a mentor who influences and supports the learners in the desired direction.
- ✔ BOMIS teachers are professionally trained and possess both the knowledge and the skill to positively impact a child's learning outcome.
- ✔ Our teachers are hardworking, dedicated and committed towards children and their work.
- ✔ Our teachers are equipped with extraordinary levels of patience, enthusiasm and creativity.
- ✔ They are driven by the eagerness to learn which has helped them to embark on a journey of continuous professional growth.



Our teachers make use of flipped classrooms, project-based learning, brainstorming, role-playing, interactive lab experiments, and self and peer evaluation, to make learning more engaging and effective.

## Teacher Training and Support at Birla Open Minds International School – The BOMIS teachers are observed on a regular basis to maintain the quality of teaching and given feedbacks for further improvisation.



### BOMIS Annual Audits

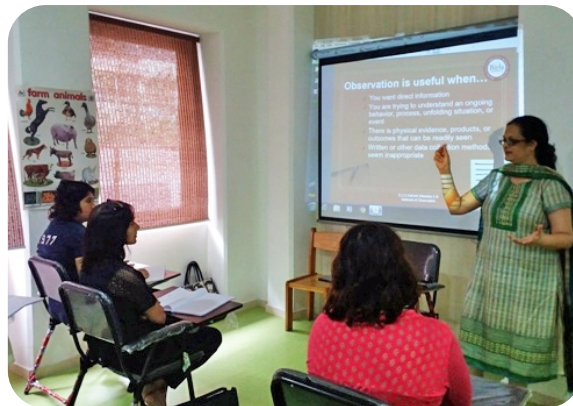
BEL team takes the quality of education at each of our Birla Open Minds schools very seriously and as a practice, we carry out annual audits which give us a clear idea of the present and possible use of the resources we provide to our schools. Teams from Birla Edutech visit Birla Open Minds schools to take account of facilities and resources and submit reports of the same. This ensures that Birla Open Minds schools maintain high standards of quality. The main aim of this exercise is to live up to our commitment of continuously improving on policies, facilities and quality through which our schools strive for educational excellence.

### BOMIS Teacher Resources

To supplement the learning, we have specially customized Coursebooks, funsheets, activity based culminating worksheets, educational resources in the form of audio visuals etc. exclusively designed, developed & made available for our BOMISites. These learning materials are carefully implemented by our capable teachers using our detailed, comprehensive & child-centered lesson plans compiled together as Teachers Curriculum Guide which are researched, designed & developed centrally at the BEL Head Office for the benefit of both our teachers and children.

### BOMIS Teacher's Training and Support

Teacher Training Workshops are conducted by the Research and Development Team of Birla Edutech Ltd for BOMIS teachers at regular intervals. The workshop modules focus on cutting edge learning approaches in every subject; induction and enrichment training, learner centred activities, interactive lessons and blended solutions. The BOMIS teachers are observed on a regular basis through Teacher Support Rounds to maintain the quality of teaching and given feedbacks for further improvisation.



With a robust curriculum, comfortable learning environment, excellent infrastructure and strong support, BOMIS offers the best to its students. It is not just a school, it is a way of life - a life full of growth, excitement, promises, challenges and adventure. It endows one with the attitude, attributes, the skills and the social traits to care for self, others and environment, which aims to make one a complete person. When all these come together, a sense of pride is instilled amongst one - the pride of being self sufficient, skillful, focused, accepting, perseverant and much more, so that wherever one goes, one carries this pride.

## **Birla Open Minds Preschool Curriculum –** Celebrates the importance of these formative years by providing a strong and sure start.



### **GEE TEE**

Our mascot is a charismatic and clever bird standing tall and proud ready to spread its wings and plunge into the high flight of creativity, collaboration and innovation for a strong and sure start. It signifies confidence that each child represents at Birla Open Minds International School.

### **Early Years (Pre – Nursery to Kindergarten 2)**

OUR CURRICULUM draws on neuroscientific research and is developmentally appropriate, integrated and creative. It aims to instill care for self, for others and for the environment in our children

### **Developmentally Appropriate**

Our approach honours the development of the child as whole; intellectually, physically, emotionally, and socially across ages. It also recognises that all children are intelligent and capable learners and will develop across and within these developmental areas in unique and individualized ways.

The learning goals that lead the curriculum, instruction and assessment are developmental in nature and ensure a “whole child” focus.



### **Creative**

We engage learners through creative learning experiences. Creative expression across learning domains is invited, encouraged and celebrated.

Children are exposed to dynamic learning environments, challenges and choices in activities, open ended questions, and interactions with peers and teachers. Working with colours and textures, engaging with music and movement and a plethora of other mediums with ample freedom ensure nurturance of the creativity in each child.

### **Integrated**

Since children learn in different ways and learn better if learning experiences are interconnected or integrated, our curriculum is suitable for them. It is theme based and investigate ideas from multiple perspectives.

Our themes combine different areas of learning and become catalysts for developing concepts, skills and attitudes while relating this learning to real life. This learning ensures development of multiple intelligence in children.





## **Happy Learning Spaces – We believe in Providing engaging and stimulating environment for young learners.**

### **Happy Learning Spaces**

Our Learning Environment is cheerful, engaging and designed keeping in mind the needs of children. The furniture is ergonomic and safe; classroom spaces are aesthetic, uncluttered and organised; the materials and resources used are open ended while being non-toxic; learning is made amply visible through various displays and the whole environment is child compatible. The specially designed curriculum aims to maximize children's creative potential and build their life skills to ensure that they make good choices and lead meaningful lives. The creative potential is nurtured through a wide variety of experiences and expressions encompassing the creative arts, performing arts, scientific exploration, life skills enrichment, outbound explorations and edutainment.

### **Learning Centres**

Learning centres are resource equipped centres set up throughout the classroom where children engage in activities of their choice. The centres for block play, dramatic play, language and literacy, math and manipulatives, exploration, art and music have theme focused material. Play at these centres reinforces conceptual understanding as well as provides opportunities for differentiated learning.

### **The Circle**

The centre of the classroom is free and has the celebrated circle. Whole group interactions during the circle time, music and movement activities and organised games build community, strong social skills and a spirit of belonging in the learners. This circle enables the teacher to maintain eye contact with every child.

### **The Outdoors**

The verdant environs resplendent with vegetable patch, garden, trees and flowers aplenty in addition to equipment for play make a vibrant outdoor area. The outdoors are an extension of the classroom and children with their magnifying glasses and cane baskets can be found exploring, discovering and sharing the mysteries of nature.

### **Table Top Activities**

Table top activities are teacher guided and provide focused learning experiences for small groups of children. They allow the teachers to have intense interactions with the children and provide individual mentoring. Some of the activities children engage with are scientific exploration, art work, theme based fine motor and eye hand coordination activities, concrete math manipulatives and puzzles galore.

### **Care For Self, Others And The Environment**

Care for self begins with building self esteem through developing self help skills, providing choices, autonomy, challenges, success affirmations and support to help the children know and flourish in this knowledge of being unique and special.

Working collaboratively through opportunities for sharing, waiting for one's turn, taking the role of the other and resolving conflicts helps children extend this care to others.

Caring for the environment is a habit that is inculcated early in children. This connecting thread runs through the entire curriculum and the practices followed at BOMIS.

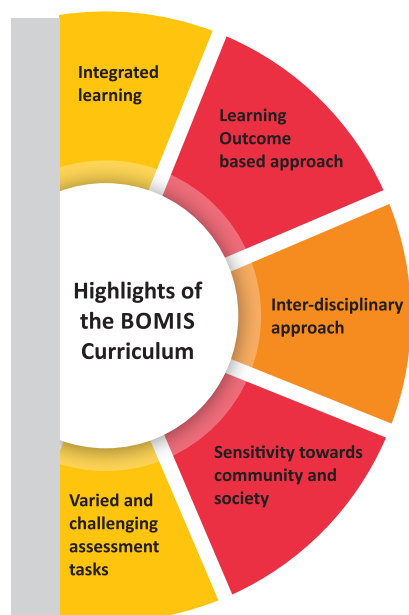
# Primary Years Curriculum at Birla Open Minds International School – The focus of the curriculum is to connect what is taught and learned in the various subjects to life outside the classroom.

## BOMIS Curriculum

At BOMIS, the curriculum is designed and developed to fit the necessities, interests, capabilities and learning styles of each child. Thus, our BOMISites are the centre of our educational processes & systems. The curriculum, by each of its parameter focuses to boost the social, emotional, spiritual, physical, motor and cognitive development of each child.

The curriculum emphasises on reaching out to individual student and taking into account their uniqueness in terms of personality types, varied learning styles & intelligences to help to become lifelong learners.

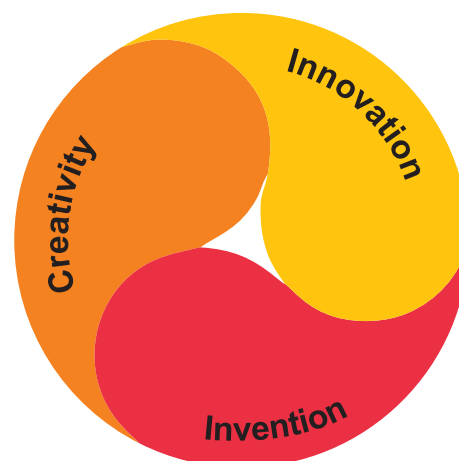
The well planned Primary Years curriculum ensures that each child at school enjoys these years in learning, discovery and creative engagement.



## Features of BOMIS Primary Years Curriculum

- Thematic and integrated approach
- Value individuality
- Learn through varied mediums
- Nurture divergent thinking to foster creativity
- Making new connections leading to innovation
- Skill based creative exercises making learning and studying joyful

**The focus of BOMIS Curriculum is Creativity, Innovation and Invention.**



## Primary Years (Grades 1 - 4)

The Primary Years curriculum is carefully designed to nurture the child in all dimensions of his/ her life to bring out the essence of a holistic being. The curriculum aims to foster the development of key skills in communication, problem-solving, citizenship, critical thinking, inquiry, investigation, analysis, social, personal awareness and collaboration.

## Scholastic and Co-scholastic Approach in Primary Years – In Birla Open Minds

International School, the scholastic and co-scholastic subjects go hand in hand and assist the BOMISites to rise to excellence.

### Scholastic and Co-scholastic Approach

Our Primary Years curriculum is age appropriate. It is based on learning outcomes and progressive teaching, integrating the concepts, processes and ways of thinking drawn from the diverse disciplines of subject areas. We begin the journey with the following subjects:

- ▶ English Language Arts
- ▶ Hindi
- ▶ Third Language
- ▶ Environmental Studies
- ▶ Mathematics
- ▶ Information and Communication Technology

The Co-scholastic subjects are:

- ▶ Performing Arts
- ▶ Visual Arts
- ▶ Physical, Social, Health Education
- ▶ Physical Education, Yoga & Sports(SPEED)
- ▶ Soul Science

The six integrated themes help the learners in Grades 1 - 4 make meaningful connections through the immersive process, wherein a thematic focus straddles all areas of learning, each theme with a duration of 4 to 6 weeks.

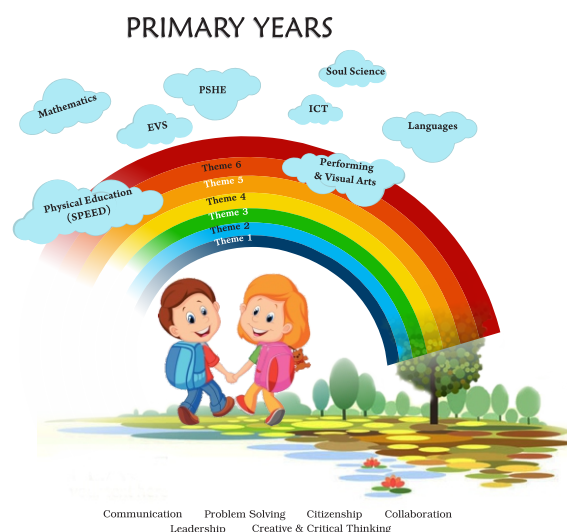
At BOMIS, we conduct Filler Weeks and Subject Weeks to develop various skills, such as, reading skills, writing skills, listening skills, speaking skills, mathematical and scientific skills.

The Curricula for grades 1-4 are thoughtfully planned to ensure that each child at school enjoys these years in learning, discovery and creative engagement and research on how the brain learns best, developmental appropriateness, the theory of Multiple Intelligences and the National Curricular Framework, have guided the planned curriculum.

Learning environment is an affirmative and enabling one. Bright airy learning spaces, creative learning centres, library, integrated laboratories, ICT laboratories, exciting and interactive display boards, create an environment that catalyses learning.

Assessment is an ongoing process. It guides the learners in their pursuit of learning. Theme End Assessments and Term End Assessments ensure timely feedback on degree of achievement of individual as well as grade-level outcomes. These, in turn guide teachers and parents to provide challenge or support as per need in a 'timely' and 'effective' manner. The progress of each child is shared through detailed report books along with a portfolio of documented work, making learning visible to all.

All these thoughtful processes ensure the fulfillment of our ultimate goal of teaching in a way that all students learn and develop various skills, such as, reading, writing, listening, speaking, communication, problem-solving, citizenship, collaboration, leadership and creative and critical thinking.





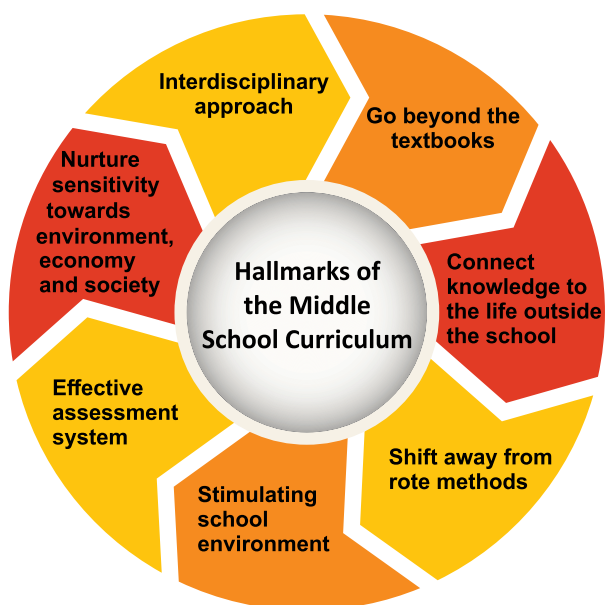
## Middle Years Curriculum at Birla Open Minds International School – Middle School

Curriculum amalgamates the curriculum of all the boards seamlessly and it is the major reason behind its uniqueness.

### BOMIS Middle School Curriculum

In the middle school curriculum, we begin teaching separate subjects, but integration and interdisciplinary teaching approach continues to take place wherever appropriate. The approach in the middle school years continues to be student-centric where the onus of learning shifts from the teacher to the student. The methodology is constructive, taking the child from his/her known context to the unknown, from concrete to abstract and from local to global. A wide range of innovative methods, such as, active learning, cooperative activities, inquiry and experience-based learning are used in classroom. These methods aim at developing competencies rather than mastering the given content knowledge.

### The hallmarks of the BOMIS Middle School Curriculum are:



### Middle School subject offerings

SCHOLASTIC SUBJECTS

CLUBS

CO-SCHOLASTIC SUBJECTS

Our focus is to take students away from rote learning, make them go beyond the textbooks and establish a real life connect with the information that they gather at school. The areas of learning covered within its parameter are – English Language Arts, Hindi, Third Language, Mathematics, Science, Social Studies and ICT (Information and Communication Technology). Beside the scholastic areas there are various co-scholastic areas that are a part of the curriculum and give the students the opportunity to express themselves, such as, Performing Arts, Visual Arts, various individual and team sports, Community Service Projects, Life Skills and a specialised sports programme (SPEED).



**SPEED** programme helps to develop sports skills and creates health awareness. Exposure to team and individual sports encourage a sense of team spirit, and individual effort and accomplishment.

BOMIS follows a holistic and dynamic approach of education where, apart from scholastic and co-scholastic subjects, a child also learns about 'soul science' at school.

The study of 'soul science' will help children to deal with the different emotions, challenges, stress, anxiety and social insecurity in life. It teaches and guides them on concepts of leadership and motivation, and how to regulate personal and school life through time management and other lessons, which have been developed through extensive research and application by our R&D team.

## Middle Years Curriculum – We believe in evaluating our BOMISites effectively.

“Assessment of learning, assessment for learning and assessment as learning are essential to literacy education.”

The wide range of scholastic and co-scholastic opportunities offered helps instill in children confidence and discipline. The focus on developing communication skills helps them appreciate the value of education, as it reflects in their ability to express themselves, in addition to developing pragmatic skills. Field trips, excursions, activities, projects and presentations provide experiential learning opportunities. Dance, Fine Arts, Western and Indian Music, Yoga, Speech and Drama promote holistic development. Besides communicating through language about how we perceive our world, we also communicate through actions and images to express our creative ideas.

PSHE (Personal, Social, Health Education) helps students address their age specific interests and concerns, builds awareness, and promotes compassion and ethical conduct.

Children construct stories through a series of pictures or assemble toys by following guided instructions and illustrations. These actions and images gradually accumulate in our thought process as language and thereby act as a storehouse of past experiences. Students are encouraged to participate in inter-house cultural and sports events. Active learning techniques like free play, dramatisation, puppetry, singing, dancing and cooking enhance their interest in learning.

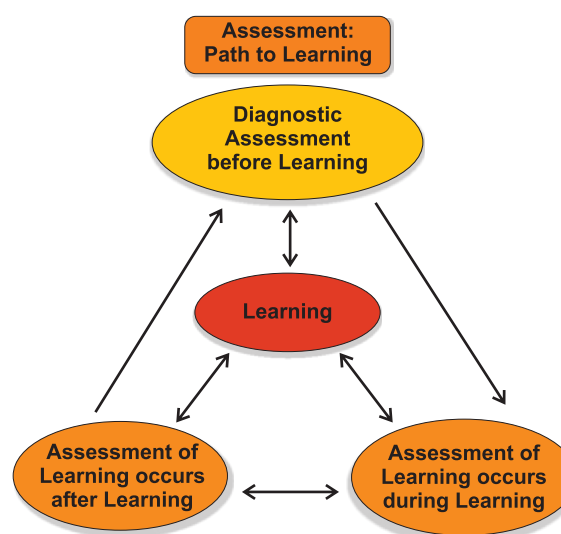
The Primary and the Middle School approach of using experimental and student centric methodologies continue in the High School years.

### Assessments

As we believe in assessing children on a regular basis using a variety of tools and techniques, we have Ongoing Assessments and Term End Assessments.

Ongoing assessment occurs regularly throughout the instructional process. Periodic tests include a range of tools like rubrics, checklists, projects, tasks, written tests, etc.

Term End Assessment is a test, usually given at the end of each term. These are part of paper-pencil tests; however, they include questions which need comprehension, analysis and critical thinking.



As we look at the holistic development of the child, we also ensure that no child is left behind. Research done on the learning process, learning styles and multiple intelligences are taken into consideration at every stage of designing. In this way, we hope to fulfill our ultimate goal of teaching in a way that all students will learn.

## High school curriculum at Birla Open Minds International School – High school curriculum provides a dynamic and broad spectrum learning environment that will foster critical thinking skills in students and help them become life-long learners.

### High School (Grade 8 – 12)

At the high school stage, BOMIS offers a variety of options to the students. The students can opt for the Indian boards – such as the CBSE or the CISCE – or can opt for an International Curriculum such as Cambridge or IB programmes. Students have the option of opting for the ICSE/ CBSE or IGSCE curriculum in Grade 8. In grade 11 again the students have the option of going for the ISC/ CBSE curriculum or the Cambridge A/AS levels or the IB Diploma programmes.

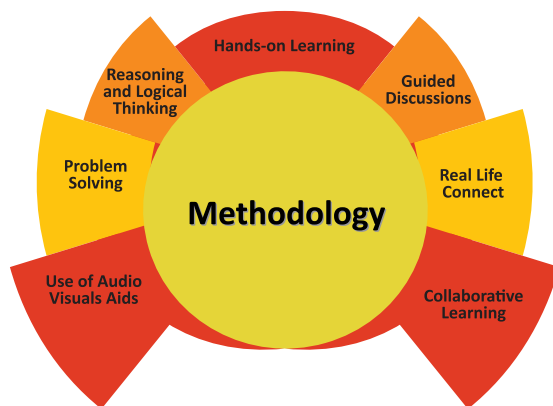
Our curriculum offers a variety of routes for learners with a wide range of abilities.

BOMIS offers a flexible and stimulating curriculum, supported with excellent resources and training.

For learners, BOMIS helps improve performance by developing skills in creative thinking, enquiry and problem solving.

BOMIS develops learner knowledge, understanding and skills in:

- Age appropriate content
- Applying knowledge and understanding to new as well as unfamiliar situations
- Intellectual enquiry
- Flexibility and responsiveness to change
- Working and communicating in English
- Influencing outcomes
- Cultural awareness



### Career Development Programme

BOMIS offers the Career Development Programme which plays a vital role as it guides the students and parents to choose the best career path for their future endeavours.





## Special Features at Birla Open Minds International School – We focus on providing global exposure and advanced technologies to our enthusiastic learners for acquiring 21st century skillsets.

### Birla Smart Schooling

Birla Smart Schooling is available for BOMISites which consists of animated videos and simulations that covers topics related to Science and Mathematics. It makes learning and studying more creative, dynamic and fun for BOMISites. The 2D animated videos act as powerful visualisation tools for easy understanding of complex concepts.



### STEM based Learning

Science and technology are integral to the process of modern education and learning. They are also pathways to career opportunities in the future.

Robotics provide a context for inquiry and discovery, leading BOMISites to become active problem solvers and engage in their own learning.

### Fostering the spirit of Internationalism

We provide the students with an enriching global exposure by participating in various cross - cultural programmes.

Exposure to different cultures helps BOMISites to develop leadership skills, tolerance and compassion.



### Learning Management System

BOMIS provides digitised services through Learning Management System.



#### Time Table

Stay up to date for time-table



#### Attendance

Track Attendance of BOMISites



#### Exam and Result

Track upcoming Exam, Result and Progress Graph



#### Assignment

Track Home Assignment and Submission



#### Announcement

Stay connected with latest news, circular and message.



22 States | 100+ Cities | 150+ Institutes  
a strong & sure start



**BIRLA SCHOOL CAMPUS**  
Shree Guru Gajanan Dham Rewsa, Amravati,  
Maharashtra 444801

☎ 9284658051 | 8668275336 | 0721- 2662400  
Email : [birlaschoolamravati@gmail.com](mailto:birlaschoolamravati@gmail.com)

**Enquiry Office : BOMIS- AMRAVATI OFFICE,**  
Third Floor, Next Level Mall, In Front Of Grand Mehfil Hotel,  
Neer Dayasagar Chauk, Amravati - 444602



